



Rabbit anti VEGFR-2(Paired Y951) (CD309) Polyclonal Antibody

Alternative Name(s): vascular endothelial growth factor receptor 2; VEGFR2

Order Information

- **Description:** VEGFR-2(Paired Y951) (CD309)
- **Catalogue:** 602-090
- **Lot:** See label
- **Size:** 100ug/200ul
- **Host:** Rabbit
- **Clone:** nan
- **Application:** IHC(P), WB
- **Reactivity:** Hu, Ms, Rt

ANTIGEN PREPARATION

A synthetic peptide corresponding to the epitope –KDYVG- without a Tyr951 phosphorylation site of human VEGFR-2 protein. This sequence is identical within human, mouse and dog.

BACKGROUND

Vascular endothelial growth factor receptor-2 (VEGFR-2), also known as CD309 antigen, the earliest known marker for vascular endothelia cells, is essential in vasculogenesis and angiogenesis. Binding of the dimeric VEGF-A to the extracellular domains of two monomeric receptors induces dimerization and activation of tyrosine kinase at tyrosine residues Y951, Y1054 and Y1059 in the kinase domain serve as positive regulatory sites. Phosphorylation at Y951 of the kinase insert is related to the migration of endothelial cells for tumor vascularization and growth.

PURIFICATION

The Rabbit IgG is purified by Epitope Affinity Purification

FORMULATION

This affinity purified antibody is supplied in sterile Phosphatebuffered saline (pH7.2) containing antibody stabilizer

SPECIFICITY

This antibody recognizes ~200 kDa of human VEGFR-2 protein without a phosphorylation site of Tyrosine 951. It does not recognize phosphorylated peptides. This antibody also reacts with mouse. The other species are not tested.

STORAGE

The antibodies are stable for 24 months from date of receipt when stored at –20oC to –70oC. The antibodies can be stored at 2oC-8oC for three month without detectable loss of activity. Avoid repeated freezing-thawing cycles.

APPLICATIONS/SUGGESTED WORKING DILUTIONS*

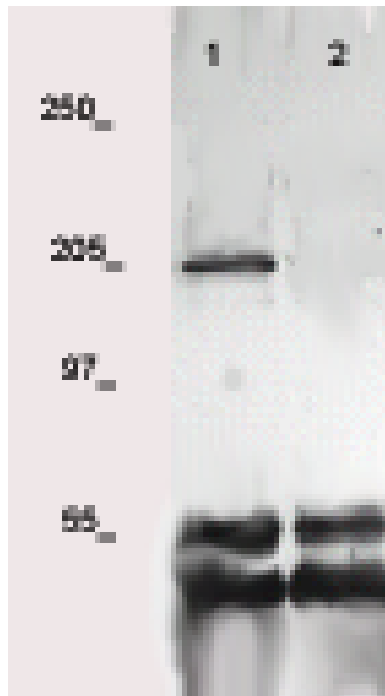
- Western Blot: 0.1-1 µg/ml
- ELISA: 0.01-0.1 µg/ml
- Immunoprecipitation: 2-5 µg/ml
- IHC: 2-10 µg/ml
- Flow cytometry: Not tested
- Molecular Weight: 200.0
- Positive Control: Kidney Tissue
- Cellular Location: Cell Membrane

*Optimal dilutions should be determined by researchers for the specific applications.

FOR RESEARCH USE ONLY.

AbboMax, Inc 2528 Qume Drive, Suite 8, San Jose, California 95131, USA
1 408-573-1898 (Tel). 1 408-573-1858 (Fax). www.abbomax.com info@abbomax.com

DATA ATTACHMENTS



Western Blot: The whole lysate derived from Hela (20 ug/lane) immunoblotted by Rabbit anti - p53 (Cat#) at 1:500. Observed a major immunoreactive band at molecular weight kDa.

REFERENCES

FOR RESEARCH USE ONLY.